

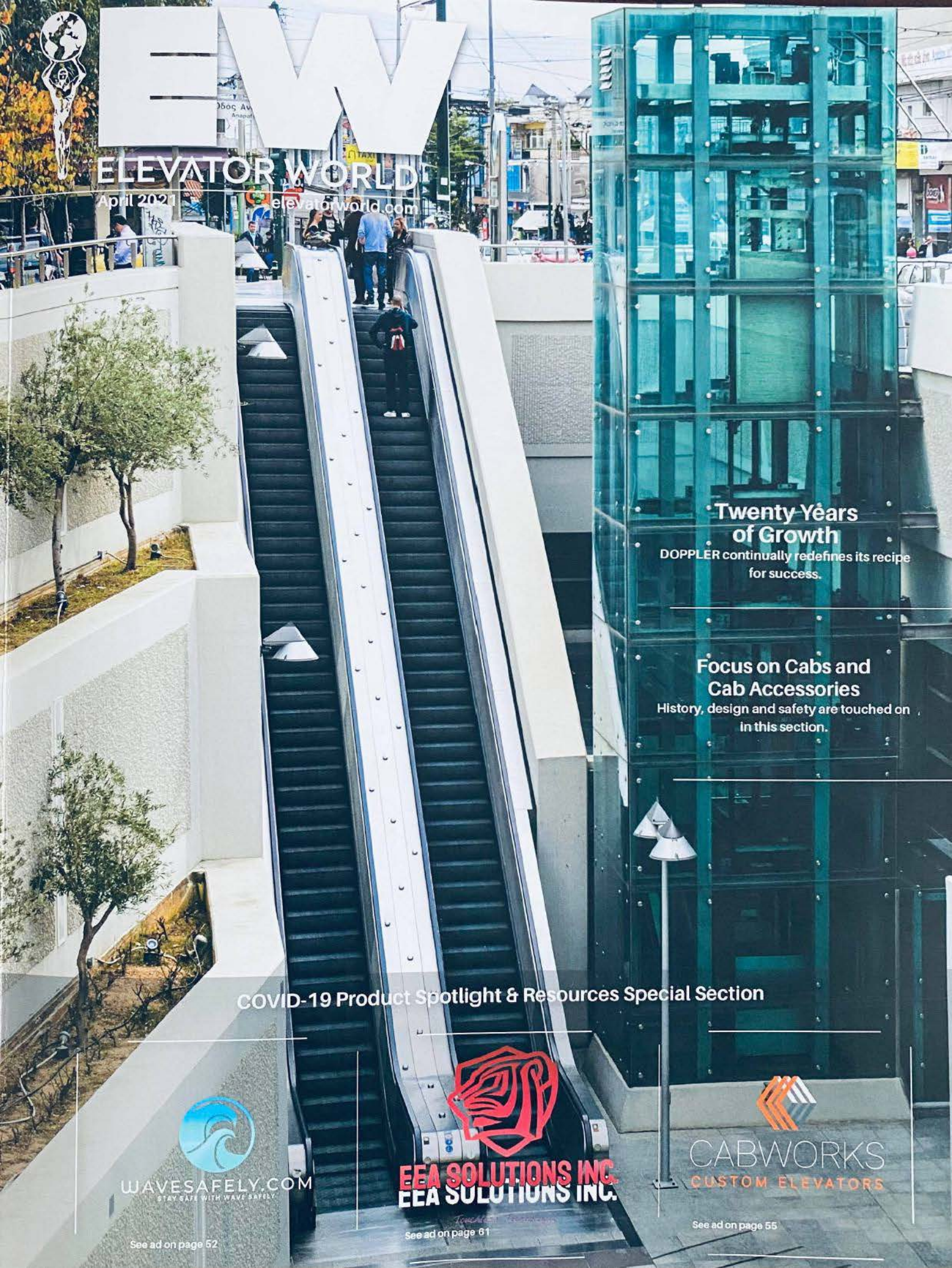


EW

ELEVATOR WORLD

April 2021

elevatorworld.com



Twenty Years of Growth

DOPPLER continually redefines its recipe for success.

Focus on Cabs and Cab Accessories

History, design and safety are touched on in this section.

COVID-19 Product Spotlight & Resources Special Section



WAVESAFELY.COM
STAY SAFE WITH WAVE SAFELY

See ad on page 52



EEA SOLUTIONS INC.
EEA SOLUTIONS INC.

See ad on page 61



CABWORKS
CUSTOM ELEVATORS

See ad on page 55

Electronic Load-Weighing System

Ametal, an Istanbul-based manufacturer and vendor of complete elevator systems and components, has introduced the **LWS 3F Electronic Load Weighing System**, which measures the load weight within the cabin. Offered in three different types, the system can be mounted on ropes and rope attachments. The LWS 3FE 311 model measures load weight within the cabin via rope attachment and is produced with different wedges that measure weight from different parts. “The success of the system depends on the curved washers supplied with the product,” the company says. “Curved washers are good at minimizing measurement mistakes arising from the axial movements of the rope attachments when the cabin reaches the last floor.”

ametel.com



The LWS 3F 310 model, in which four load cells are mounted on the rope rods (on the threaded rod) and precisely measure weight under pressure

Interior Film

Hyundai L&C of Vancouver, BC, Canada, offers **Bodaq® Interior Film**, a lightweight, self-adhesive, stretchable refinishing product intended for interior design and decoration. The company says it can be applied to any surface, whether flat or curved. It adds that, for elevator cabs, there is no need to remove or drill into panels or ceilings. The company adds that the product maintains a “perfect appearance” for at least 10 years. The refinishing material is also fire-retardant, and its only waste is the film backing paper.

bodaq.com 



“Terrazzo Premium” Bodaq Interior Film used in lobby refinishing



The film protects from scratches and other damage from everyday use.



A film from the company’s “Fabric Collection” used in lobby refinishing